



# Potomac Lily Society Newsletter

Volume 39 Number 2

<http://potomacilysociety.org>

May 2010

## THE POTOMAC LILY SOCIETY PRESENTS ITS FORTY-NINTH ANNUAL LILY SHOW

### *Magical Lilies*

#### BROOKSIDE GARDENS

1800 Glenallen Ave.  
Wheaton, Maryland

**Admission is free and the show is  
open to the public**  
**Saturday, June 26, 2010**  
**12:30 p.m. to 5:00 p.m.**  
**Sunday, June 27, 2010**  
**9:00 a.m. to 4:00 p.m.**

#### Inside this Newsletter

- ❁❁ 2010 Lily Show info ❁❁
- ❁❁ NALS Regional Service Medal ❁❁
- ❁❁ Two Korean Lilies ❁❁
- ❁❁ Membership renewal form ❁❁
- ❁❁ Other society events ❁❁

#### PRESIDENT'S MESSAGE

A month has passed since our Annual Banquet, which was a very enjoyable event. For those who did not attend, Bob Howell gave an interesting presentation on garden chrysanthemums. An additional highlight was the awarding of the NALS Regional Service Medal to Jack Roe for his many years of service to our society. See more about the award on p.2.

We are now moving on to our annual flower show, to be held in late June at Brookside Gardens. The schedule for the meeting is either included with the hard copy mailed with this newsletter or included as an attachment to the message with this newsletter. In a later e-mail, we will send out a show flyer. We hope those receiving it will distribute it to alert the people of the event. We will need members to serve as Hosts/Hostesses during the hours that the show is open to the public (see the show schedule). Please contact me ([lydon.j@verizon.net](mailto:lydon.j@verizon.net), 301-595-1066) to reserve a time when you can do so. We also need Clerks & Runners on the morning of Saturday, June 26 to assist the judges while they judge the exhibits. Please contact Susan & John Rountree ([BINGNONA@AOL.COM](mailto:BINGNONA@AOL.COM), 703-534-2391) if you can help with that task.

This year we will hold a lily photo contest. The rules for the contest are on p.4. Given that most everyone has a digital camera, we anticipate a high level of participation in this contest. The deadline for submissions is September 15 and the winners will be announced at our October picnic and bulb exchange (date to be announced in our next newsletter).

I wish you all a bountiful lily season this year, and I look forward to seeing you and your entries at our show. Consider bringing a few extra stems for those preparing floral designs. Happy gardening!

John

The Potomac Lily Society is a non-profit organization established to promote and encourage interest in the cultivation, propagation and improvement of the genus *Lilium* in its many forms and hybrids among the membership, other plant and horticultural groups, and the public.

### OFFICERS

#### **President**

John Lydon  
301-595-1066  
Lydon.J@verizon.net

#### **Vice President**

Kathleen Hoxie  
703-437-3207  
KathleenHoxie@aol.com

#### **Secretary**

Tricia Kincheloe  
703-861-1388  
trixielee29@cs.com

#### **Treasurer**

John Roe  
703-534-6569  
jroboat@msn.com

#### **Membership Secretary**

Harlin Turner  
703-713-0138  
HarlinTurner@cox.net

### DIRECTORS

Delores Felch  
Rachel Hollis  
Jim McKenney  
John Rountree  
Dave Willmore  
Sam Wyatt  
Mary Zocchi

### NEWSLETTER EDITOR

Mary Q. Zocchi  
540-847-9418  
maryzocchi@earthlink.net

### WEBMASTER

James McKenney  
301-770-1867  
webmaster@potomacilysociety.org



## NALS Regional Service Medal presented to John Roe

John, aka Jack, has served the Society since 1985 in various capacities. He has been a Director of the Society for over 20 years. He served a term as President of the Society from 1989-1993. He currently is the Treasurer of the Society, a position which he's held since 2003.

Jack served one term as a director of the North American Lily Society from 1990-1993. At the NALS show in 2002, he and his wife Diane were in charge of registration.

In addition, Jack has been in charge of the Potomac Lily Society annual bulb sale for over 20 years (since 1993, except 2007). This is the Society's main fund raiser and involves ordering the bulbs from the suppliers, collecting orders from the members, packaging all the orders and making sure that everyone receives the correct order. In addition, he has graciously opened his home for Board Meetings and our Annual Fall Picnic.

Jack has also been very involved with our Annual Show. He helps with every aspect of the show from set up to take down as well as all of the tabulation. He also exhibits beautifully grown stems. He chaired the Tabulation Committee when the PLS hosted the NALS show in 2002 and won the award for Best in the Show.

All of the Board Members of the Potomac Lily Society have unanimously approved the proposal for Jack to receive the NALS Regional Medal. We can think of no one that is more deserving.

## ANNUAL LILY SHOW

The schedule for the Potomac Lily Society's Forty-Ninth Annual Lily Show is included with this Newsletter. The theme for this year's show is "*Magical Lilies*" and the event will be held at the Brookside Gardens in Wheaton Maryland.

Set-up for the show will be done between 12:00 - 3:00 PM on Friday, June 25. Entries may be made from 3:00 - 5:00 PM on Friday, June 25 and from 8:00 - 10:30 AM on Saturday, June 26 and must remain in place until 4:00 PM on Sunday, June 27. Assistance with moving your stems, preparation, classification, and staging will be available during these periods. Clean-up begins on Sunday at 4:00 PM. Please be present if you desire to reclaim your entries, otherwise all stems will be donated. We will attempt to collect and mail all ribbons to those who are not present.

In completing entry cards, you must fill out **both** parts of the form and follow the schedule in classifying your entry. Try to arrive with the name of your cultivar. Classification will help if they can, otherwise, it will be necessary to enter your stem as "Unknown" and it will be judged with other orphans of the same type. In completing entry cards, it is recommended that you use pre-printed name and address labels. Note that two are required per card. Also, please ensure that section, class, and variety information is complete on the bottom stub, as this is the source of information for tabulation of show results.

Members are encouraged to enter as many stems as they possibly can, keeping in mind that specimens should be well groomed and which meet minimum judging standards. At least one bloom must be open. You may otherwise groom your specimen in any way which does not alter its typical features. For example, trim brown leaf tips in a fashion that maintains the original leaf shape. Containers will be provided by the Society. For best results, bring along some extra stem material to help wedge your entry in the bottle so that it stands straight.

The Novice Class is open to any exhibitor who has not previously won a blue ribbon. This is a great opportunity for our new growers to gain familiarity with show procedures and to receive the extra assistance that goes with entry into this class. We also encourage everyone to consider the many sections available beyond the single stem or single bloom categories, such as Section F which calls for three stems of the same species, variety, or cultivar or Section G which invites the entry of lilies grown in pots with no protection.

### PLS Honorary Directors

Alice S. Fenn  
Vicki Bowen  
Ron Chiabotta  
Genie Diller  
David Diller  
James McKenney  
John A. Montgomery  
John Roe  
Joseph Uhring

### Delivering Your Lilies

The exhibition room is located in the Visitor Center Auditorium, which is located directly across from the information desk. Stems can be set up in the kitchen, which is on the right after entering the auditorium.

Cars cannot be left unattended in front of the building. If you have a lot of items to unload and transport to the exhibit room, feel free to announce in the auditorium that you need assistance unloading your vehicle.

## **PLS FIRST Lily Photo Contest**

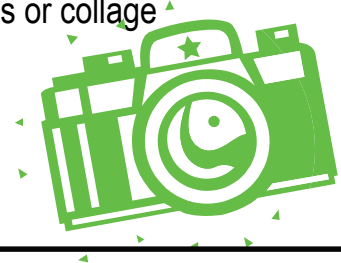
**Attention photographers!** This growing season PLS will hold its first Lily Photo Contest. Make history and be the first recipient of the PLS Outstanding Lily Photo Award. The general rules for the contest follow. Contact Jim McKenney ([jimmckenney@jimmckenney.com](mailto:jimmckenney@jimmckenney.com)) or John Lydon ([lydon.j@verizon.net](mailto:lydon.j@verizon.net)) if you have questions regarding this contest.

### **GENERAL RULES**

There will be category winners (see below) and an overall winner (PLS Outstanding Photo Award) which will include a prize of lily bulbs. Judges will consider factors such as subject, composition, technical aspects, and overall appeal. All entries are to be digital files taken of lilies during 2010 and should be in jpg format at the maximum resolution possible. E-mail images to [pls.photo.contest@verizon.net](mailto:pls.photo.contest@verizon.net) by September 15, 2010. Include in your message the category to which the images are submitted. All submissions will remain the property of the submitter but will be free for use by the PLS on their web site, publications, announcements, etc. Winners will be announced at the Annual Picnic and Plant Sale held in October.

### **Submission categories**

1. Non-*Lilium* "lilies" - plants or flowers
2. *Lilium*
  - A. In cultivation
    - Photographer's garden
    - Garden setting
    - Single bloom
    - Multiple blooms
    - Lily culture
  - B. Garden other than photographer's
    - Garden setting
    - Single bloom
    - Multiple blooms
  - C. In nature
  - D. Photo series or collage



## **Hosts & Hostesses for the PLS 2010 Flower Show**

Hosts/Hostesses are needed to greet visitors to our show. Duties include answering questions about the exhibits, lily culture, and how to become a member of our society. We will also have copies of "Lets Grow Lilies" for sale.

Please call John Lydon (301-595-1066) to offer your assistance for this important task. Hosts & Hostesses are needed for the following times:

Saturday, June 26 1:00 PM - 5:00 PM  
 Sunday, June 27 9:00 AM - 4:00 PM

**Please consider volunteering for an hour or two!  
 You meet some wonderful people!**

## **PLS Lily Show Committee — 2010**

General Chair .....	John Lydon
Awards .....	John Roe
Classification .....	J. McKenney & T. Kincheloe
Design .....	D. Felch & C. Truesdell
Educational Exhibit .....	Kathleen Hoxie
Hosts and Hostesses .....	John Lydon
Horticultural Judges.....	Ron Chiabotta
Clerks & Runners .....	Susan & John Rountree
Judges Luncheon .....	John Lydon
Saturday AM Refreshments .....	Martina Lydon
Publicity .....	J. Lydon & K. Hoxie
Schedule .....	John Lydon
Staging .....	J. McKenney & J. Lydon
Tabulation.....	John Roe

### Some Tips on Grooming Show Exhibits

Grooming is the practice of preparing specimens for entry in the show, making them look as good as possible.

Start by selecting your best stems — those which have a healthy, vigorous appearance, free from insect damage or disease. In a perfect world, the stem will have the number of blooms and buds typical for the cultivar, all well spaced and with good color and size. Practically, pick the best stem of each cultivar you have.

Cut your stem in early morning or late evening and immediately plunge it into water for an hour to harden.

When hardened, place in a container which allows you to stage the stem as you will want it.

Remove any leaves that would be in water. Carefully trim leaves to remove any brown tips or insect damage, but ensure that you retain the basic shape of the leaf. If necessary, remove heavily damaged or broken leaves and flower parts. If removing a withered flower, avoid leaving any stub or the pedicle.

Clean each leaf with a wet cotton swab to remove any dirt, spray residue, or insect remains. If cleaning is necessary on the bloom, it is best to use a dry artists brush to remove any dirt or pollen. Treat pollen as the enemy and do all you can to avoid spreading it beyond the anthers.

Place your stems in an appropriate container to transport them to the show. Avoid stems from rubbing together and any contact that could cause bruising or damage to the stem or flowers. If appropriate, cover the anthers with foil cups or tissue to prevent pollen from staining the tepals.

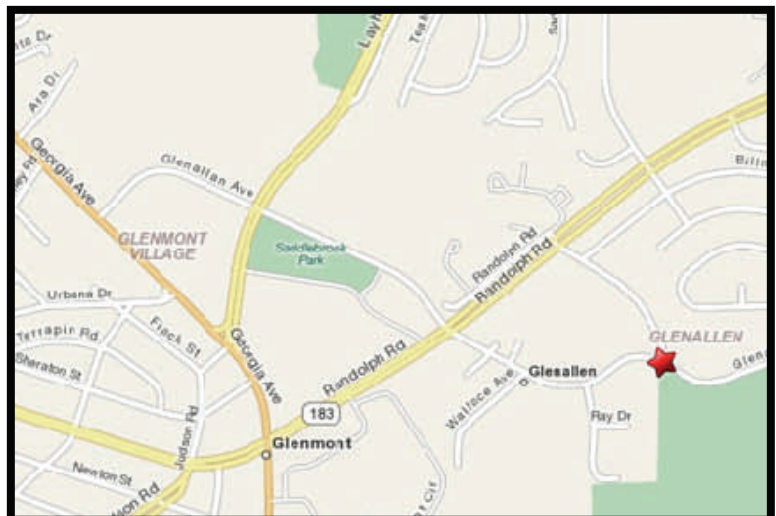
Finally, stage your stem in the show container so it is straight as possible and check to see that there is sufficient water in the container.

### Directions to Brookside Gardens

From I-270 and points west, take exit 4A Montrose Road east, which turns into Randolph Road. Go approximately 7 miles and turn right onto Glenallen avenue.

From I-495, the Capitol Beltway, take Exit 31A (north on Georgia Ave, Rt 97) toward Wheaton. Drive 3 miles north on Georgia Ave to Randolph rd and turn right. At the 2nd traffic light, turn right onto Glenallen Ave.

Brookside Gardens Visitor Center, located 3/8 mile on the right at 1800 Glenallen ave. Turn right at the 4-way stop at the stone entrance.



Misplaced your newsletter or wondering when the next PLS event will be? Bookmark our web address and you will be a click away from all the current PLS information.

[www.potomaclilysociety.org](http://www.potomaclilysociety.org)

## UPCOMING EVENTS

### **2010 Lily Odyssey: Excursion to Mars (Pennsylvania) July 7-11, 2010**

The Mid-Atlantic and Ohio Lily Societies are co-hosting the 63rd annual NALS Lily Show and Symposium in Mars, Pennsylvania (near Pittsburgh). The event will be held July 7 - 11, 2010 at the Four Points Sheraton Hotel and Convention Center, located on the Pennsylvania Turnpike (Route 76) near its intersection with Interstate Route 79. In addition to respected speakers and the lily show itself, there will be a day of garden tours and lunch at an historic house in the Amish countryside. From Washington DC, the drive takes about four to five hours, and the venue is conveniently located on the highway near the mall town, Mars. Check the site: [www.nals2010.org/](http://www.nals2010.org/) for show details.

The show program for the *NALS 2010 Lily Odyssey: Excursion to Mars!* will be fun yet low-key so attendees can focus on meeting one another and talking about lilies. The artistic design classes promise to be creative since they are space travel, planets, and the color red. If you have any questions, please contact MLS members, Vijay Chandhok or Marianne Casey ([mariannecasey@verizon.net](mailto:mariannecasey@verizon.net))

### **GCV 2010 Flower Show June 16-17, 2010**

The Petersburg Garden Club is hosting the 68<sup>th</sup> Annual Lily Show of the Garden Club of Virginia.

Union Train Station  
103 River Street, Old Towne  
Petersburg, VA 23803

To receive a registration packet by mail or to obtain further information on this event, contact Joan Pollard [Wpollard08@aol.com](mailto:Wpollard08@aol.com), 804-732-0832.

### **Book Review *Designing by Type***

The National Garden Clubs, Inc has published a new book "**Designing by Types**" which is a pictorial showing of all the various floral design types used by the National Garden Club. The designers submitting floral designs in the book are all members of local and national garden clubs. The book makes a great coffee table picture book while describing all the various types of artistic designs used by floral designers.

The book is available for purchase at National Garden Clubs, Inc. 4401 Magnolia Avenue, St. Louis, Missouri, 63110-3492

Editors Note: Board Member, Harlin Turner has a picture in the book!!

**Very Condensed Minutes:** The Annual Meeting of the Potomac Lily Society took place on March 21, 2010 at the Fort Meyer Officer's Club. President John Lydon awarded the NALS Regional Medal to John Roe for outstanding service to PLS. The president announced the upcoming Lily Show and with there being no further business, the meeting was adjourned and the program *Chrysanthemums, The Joy of Fall Beauty*, by Bob Howell began. Submitted by Tricia Kincheloe, secretary

## Two Korean lilies Submitted by Jim McKenney

Although we rarely see them at our shows, there are two Korean lilies which grow well in local gardens (and I know that I'm not the only one who grows them) and bring unique qualities to the lily experience. *Lilium hansonii* is perhaps the better known of the two I have in mind – its name is certainly easier to remember, spell and pronounce. The other is *Lilium tsingtauense*.

Both species belong to the martagon group; *Lilium hansonii* looks like a martagon, with typical downfacing thick petaled yellow flowers spotted with black. It grows well under local conditions and is often the first lily to bloom each year. This lily has been growing in east coast gardens since at least the early twentieth century.

You could be excused for thinking *L. tsingtauense* is some sort of strange, old style umbellate Asiatic hybrid lily: at first glance, especially if you are only looking at the flowers, that's what it suggests. On second look however you will notice some peculiarities. For one thing, there is the whorled foliage so typical of martagons. For another, the flowers face right up in the style of a 1a Asiatic hybrid. But look carefully at those flowers: notice something odd about them? They are not radially symmetrical, they are zygomorphic. And then there is the color: the flowers are exactly the color of the roadside daylily, *Hemerocallis fulva*. Most of you will not read that as a compliment, but there is this significant difference: the flowers of the lily seem to have been lacquered. This makes them seem much brighter than the matte finished flowers of the day lily.



*Lilium tsingtauense* has another distinctive quality. If you examine the foliage of the plants early in the season, you'll notice that it is prominently marbled, like that of some trout lilies or trilliums. This is not a sign of virus infection, and unfortunately it fades as the season progresses. This is a quality well worth incorporating in hybrids.

Our gardens are not exactly overflowing with martagon hybrids. Most of us find the martagons with a strong element of Eurasian *Lilium martagon* in their background to be chronic underachievers under our conditions. But the few martagon hybrids with *Lilium tsingtauense* in their background are a different matter. Some of them at least take well to our conditions. If I were a young exhibitor or hybridizer looking for a way to make a splash in the lily world, I would concentrate on *tsingtauense* hybrids selected for reliable performance under our local conditions.

### Your Article Here

I invite you to submit articles or notices to be included in the newsletter. Suggested items could be the highlights of other society flower shows or the NALS show this summer, gardening tips (particularly about lilies), useful websites, gardens visited, upcoming events, etc. Do not be concerned that there may not be space for your contribution. Just send it on and I will fit it in if possible. If the contribution does not contain dated information, I can always include it in a later issue.

POTOMAC LILY SOCIETY  
c/o Mary Zocchi  
2701 Park Center, Drive Apt B-308  
Alexandria, VA 22302



**Potomac Lily Society Dues Payment**

Annual dues (January to December) are \$4.00 for either an individual or couple at the same address. Dues can be paid for multiple years. The year on the upper right of the address label on this newsletter is the year to which your dues are paid. **Dues are due** if the number is **2009**. Make your check payable to the **Potomac Lily Society**.

Name: \_\_\_\_\_

Street: \_\_\_\_\_

City: \_\_\_\_\_ State: \_\_\_\_\_ ZIP: \_\_\_\_\_

Phone: \_\_\_\_\_ E-mail: \_\_\_\_\_

Mail to: Harlin Turner  
13484 Lake Shore Dr.  
Herndon, VA 20171